



LOWRANCE[®]

MARINE ELECTRONICS | 2024



THE LOWRANCE® LEGACY

It all started in the 1950s, with Darrell Lowrance and his efforts to use transistorized sonar technology to detect fish. His vision has defined the Lowrance® legacy for more than six decades – a legacy born on the water.

He set out to change the way people fished. He did just that in 1957 with the introduction of the first recreational fishfinder, the FISH-LO-K-TOR, affectionately known by millions as the “Little Green Box.”

That first Lowrance fishfinder spawned the recreational fishfinder industry and set the Lowrance brand on a path of innovation and achievement that still drives us today.

Our legacy as the top brand in marine electronics has been sustained by more than 60 years of innovation, reliability and quality, all driven by a never-ending quest to help anglers find more fish.

A white fishing boat is shown on the water under a clear blue sky. Two people are on the boat; one is standing and fishing, while the other is seated. The boat has a canopy and a large outboard motor. The water is a deep greenish-blue.

TABLE OF CONTENTS

- 2 | Sonar
- 4 | Chartplotters/Fishfinders
- 6 | HDS® PRO
- 8 | ELITE FS®
- 10 | EAGLE
- 12 | Ice Fishing
- 13 | Kayak Fishing
- 14 | GHOST® Trolling Motor
- 16 | C-MAP® Cartography
- 18 | Navigation
- 19 | Networking
- 20 | Part Number List
- 24 | Specs & Drawings

SONAR TECHNOLOGY



ActiveTarget® 2 LIVE SONAR

ActiveTarget 2 offers the highest resolution - giving the clearest and most detailed live action images beneath and around your boat.

SMOOTHER PICTURE

ActiveTarget 2 delivers a smoother and more consistent image across the entire range.

CLEAREST IMAGE

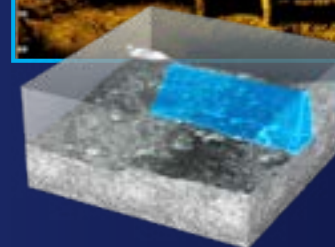
ActiveTarget® 2 gives you the clearest live views of fish and structure. By watching fish respond to your lure in real time, you can make the quick adjustments needed to catch more fish.

IN A LEAGUE OF ITS OWN

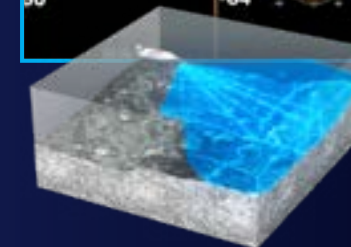
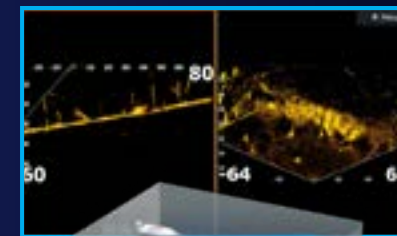
When combined with HDS® PRO, ActiveTarget 2 gives anglers the ability to add a second system for multiple simultaneous views on one screen.

High-resolution, live action images clearly reveal what's happening underwater in real time.

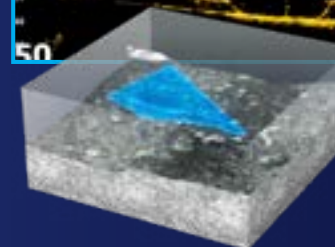
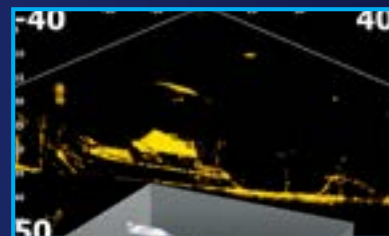
- Clearest live action views of fish and structure
- Smoothest underwater images for quicker interpretation
- See all around your boat with Forward, Down and Scout™ views
- See multiple views simultaneously and enable 180 and Scout
- Wide views for more effective bait tracking over a wider area. With second optional ActiveTarget 2 system on HDS PRO Only
- Compatible with HDS PRO, HDS® Live, HDS® Carbon & Elite FS®



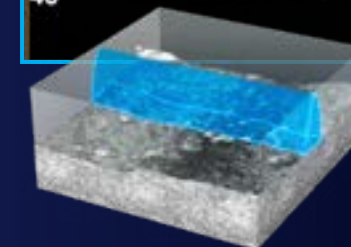
FORWARD VIEW



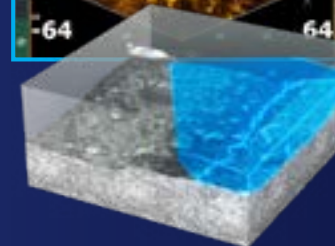
FORWARD & SCOUT*



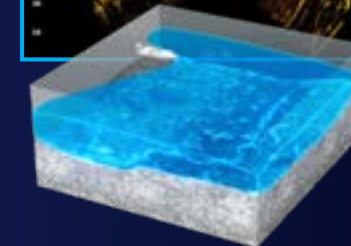
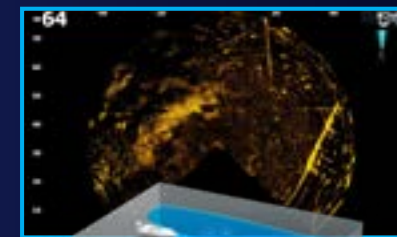
DOWN VIEW



180 VIEW*



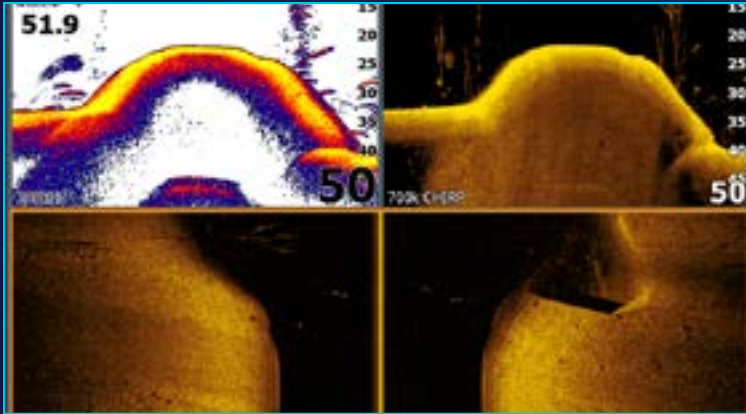
SCOUT VIEW



SCOUT WIDE VIEW*
(REQUIRES ADDITIONAL BRACKET)

(*ONLY AVAILABLE WITH HDS PRO AND TWO ACTIVETARGET 2 SYSTEMS)

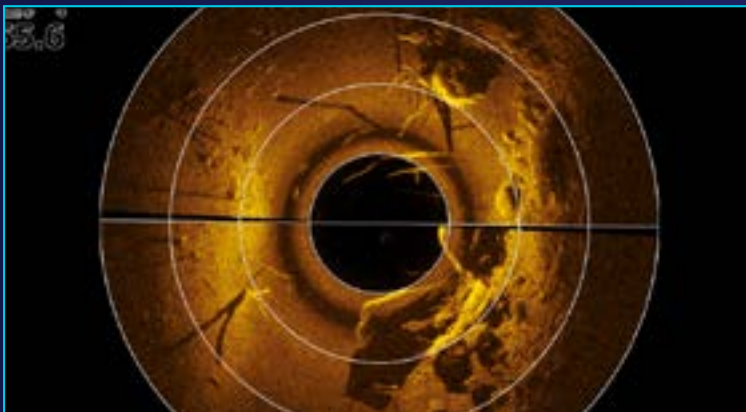
ACTIVE IMAGING™ HD



FishReveal™



GHOST® 360



Step up to the ultimate fishfinding clarity with new, high-definition Active Imaging™ HD sonar up to 1.2MHz.

The Active Imaging HD transducer not only delivers three key sonar technologies – Lowrance® CHIRP, SideScan and DownScan Imaging™ – in one convenient package, but also features a new transducer design that boosts signal clarity.

DESIGNED FOR CLARITY

Our clearest sonar ever, Active Imaging HD delivers the highest-definition views of Lowrance CHIRP, SideScan and DownScan Imaging™.

SEE THE DIFFERENCE

First introduced with DownScan Imaging, FishReveal is now available on SideScan* with Active Imaging HD and a S3100™ Sonar Module*.

Fish Reveal makes fishing easier by combining on one screen the proven target identification of CHIRP sonar with the high-resolution images from DownScan or now with New SideScan.*.

* The FishReveal SideScan view requires an optional S3100 sonar module and compatible transducer.

Combine Active Imaging 3-in-1 nosecone with a Ghost Trolling Motor and discover picture-like views a full 360 around your boat.

Key Features

- SideScan and DownScan Imaging deliver the clearest images of fish and structure
- Lowrance CHIRP with superb clarity and target separation
- FishReveal™ DownScan
- Smart transducer design boosts signal clarity
- Compatible with Lowrance HDS PRO, HDS LIVE, HDS Carbon, Elite FS with DownScan Imaging™.

* The FishReveal SideScan view requires an optional S3100 sonar module and compatible transducer.

CHARTPLOTTERS/FISHFINDERS



HDS[®] PRO

The Ultimate Fishing System[™]

HDS[®] PRO sets the standard for underwater visibility. Get the highest resolution live sonar with ActiveTarget[®] 2. And ultra high definition clarity with new Active Imaging[™] HD. Bow-to-stern boat control with the Ultimate Fishing System[™], and detailed C-MAP[®] charting make HDS PRO the most powerful fishfinding tool available.



ELITE FS[®]

Targeting Fish Just Got Easier

ELITE FS supports the complete line-up of Lowrance[®] sonar and integrations in an easy to use and easy to install package. Elite FS is available in 9- and 7-inch models, comes preloaded with new, high detail C-MAP Discover OnBoard charts and now supports the new, high-resolution ActiveTarget 2 Live Sonar and Active Imaging HD 3-in-1 with a S3100 Sonar Module.



EAGLE

Born to Fish

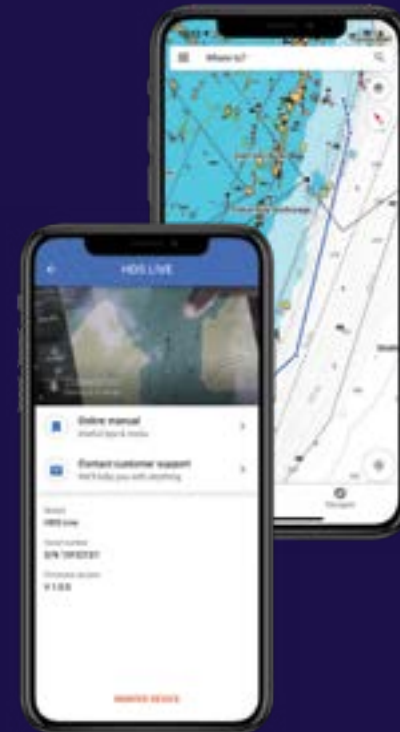
Eagle[®] was born to make fishing as simple and enjoyable as possible. Eagle features newly designed HD sonar with autotuning, game changing FishReveal[™] technology and detailed C-MAP[®] charting with Genesis Live – all on an IPS screen. With truly eagle-like vision, it really is so easy to find and see fish.

Eagle®***



	IPS HD Display	CHIRP	DownScan Imaging™	SideScan	FishReveal DownScan	FishReveal SideScan**	Genesis Live	Internal GPS Antenna	Multi-Touch/Touchscreen	ActiveTarget 2	ActiveTarget 2 Dual System Views	Active Imaging™ 3-in-1	Active Imaging HD (via additional S3100 module)	Automatic Routing	Ghost® Trolling Motor Integration	Smartphone Notifications	Ethernet Networking	Wireless Connectivity	NMEA 2000®	Engine Integration	SmartSteer™	SmartSteer™ Motorguide® Xi5 Trolling Motor Integration	Power-Pole® Xi5 Trolling Motor Integration	Radar	Chart Overlays For ActiveTarget 2 and Ghost 360	NMEA 2000® Audio	High-Performance Processor	LiveCast™**	Dual Channel CHIRP	NMEA 0183®	Video Input
Elite FS®		•	•	•	•	•	•	•	•	•	•	•	•	•	•	•	•	•	•	•	•	•	•	•	•	•	•	•	•	•	•
HDS® PRO		•	•	•	•	•	•	•	•	•	•	•	•	•	•	•	•	•	•	•	•	•	•	•	•	•	•	•	•	•	•

*FishReveal SideScan requires a S3100 Sonar Module and ActiveImaging HD FishReveal transducer **Compatible only with HDS-12 and HDS-16 *** Excludes Eagle 4x



Lowrance® App

The Lowrance App can be used as a standalone tool or synced with Lowrance devices for added benefits – from device registration, software updates and other downloads to saving waypoints, routes and trails, making them accessible both on and off the water.

The app works from a smart phone, tablet or computer and is available on the Android® Play Store and Apple® App Store.



HDS[®] PRO

SEE MORE, CATCH MORE



Available in 9", 10", 12" & 16" Sizes

Experience the next level of fishfinding with new HDS[®] PRO displays, featuring the ultimate clarity of enhanced Lowrance sonar, the latest C-MAP[®] charts and complete bow-to-stern control.

ACTIVETARGET[®] 2

ActiveTarget 2 brings the highest-resolution and best clarity of any live sonar. By watching fish respond to your lure in real time, you can make the quick adjustments needed to catch more fish. Anglers also have the option to add a second system for more simultaneous views.

ACTIVE IMAGING[™] HD

Get the clearest images of fish and structure with Lowrance[®] CHIRP sonar. And experience new FishReveal[™] SideScan and DownScan views, to easily identify fish to the sides and beneath the boat.

C-MAP CHARTS

Powerful, intuitive charts are key to any fishing system, helping anglers find the best fishing spots and navigate there safely. C-MAP charts bring great routes, social layers, and even real-time mapping with the powerful Genesis[®] Live. Preloaded Discover OnBoard charts include full-featured vector charts, custom depth shading, high-resolution coastal coverage and 1-foot contours on more than 27,000 lakes across the U.S. and Canada



GHOST MotorGuide

ActiveTarget 2

HDS PRO

POWER-POLE

ENGINE INTEGRATION + OUTBOARD PILOT

MERCURY

HONDA MARINE **SUZUKI** **YAMAHA**

ActiveImaging HD

THE HDS[®] ULTIMATE FISHING SYSTEM™

BOW-TO-STERN CONTROL
 HDS PRO forms the heart of the Ultimate Fishing System, offering easy integration with Power-Poles, autopilots, engines, radar, communications, and much more. Plus expanded controls for the Ghost trolling motor.

Key Features

- Compatible with ActiveTarget[®] 2 and Active Imaging™ HD
- Supports two ActiveTarget Live Sonar Systems for multiple views simultaneously
- SolarMAX™ HD Touchscreen viewable at extreme angles and through polarized lenses
- Supports New FishReveal™ SideScan with S3100 Module, as well as Downscan
- Available in 9, 10, 12 and 16-inch display size
- Real-time mapping available with C-MAP[®] Genesis Live.
- Expanded controls for the Trolling Motors.
- Support for new ActiveTarget Scout and Ghost[®] 360 chart overlay views
- Large programmable keys for 10-inch, 12-inch & 16-inch sizes
- Touchscreen control of Lowrance[®] & MotorGuide[®] Trolling Motors, Autopilot, Outboard Pilot and Power-Pole[®] anchors.
- NMEA 2000[®], Wireless and Bluetooth[®], connectivity



ELITE FS[®]

Targeting Fish Just Got Easier



Available in 7" & 9" Sizes

The Elite Fishing System[®] (FS) combines the power of the full line-up of Lowrance[®] fishfinding tools in a more affordable, easy-to-use display.

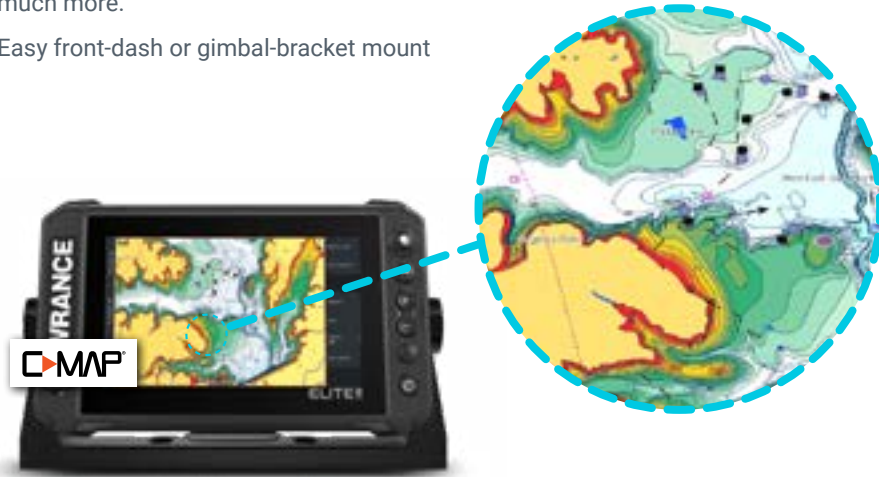
From new high-resolution ActiveTarget[™] 2 Live Sonar and Active Imaging[™] with Lowrance CHIRP sonar, SideScan /DownScan Imaging[™] and FishReveal[™] to the incredibly detailed C-MAP[®] DISCOVER[®] Onboard preloaded Fishing Maps, Elite FS gives you all the tools you need to find and catch more fish.

Elite FS displays bring enhanced integration capability to the Elite series with full Ethernet networking, wireless connectivity and engine integration, plus touchscreen control of Lowrance & MotorGuide Trolling Motors and Power-Pole anchors.



Key Features

- ActiveTarget® 2 Live Sonar ready
- Active Imaging™ HD ready with a S3100 module
- FishReveal™ DownScan ready
- New! Preloaded C-MAP® DISCOVER® OnBoard
- C-MAP® Easy Routing™, Navionics® Autorouting capability
- C-MAP® Genesis® Live Real-Time Mapping
- Multitouch
- HALO®24, 20+ and 20 compatible
- Wide range of mapping options including C-MAP®, Navionics®, Florida Marine Tracks and more
- Touchscreen control of MotorGuide & Lowrance Trolling Motors and Power-Pole shallow water anchors
- Engine integration and outboard pilot control
- Wireless connectivity
- Full networking with Lowrance Ghost, MotorGuide, Radar, Autopilots, PowerPole and much more.
- Easy front-dash or gimbal-bracket mount



C-MAP DISCOVER ONBOARD

Spend more time fishing and less time searching for fish-holding areas with C-MAP DISCOVER OnBoard charts preloaded in Elite FS™ displays. Find key fishing areas with full-featured vector charts, custom depth shading, high-resolution coastal coverage and 1-foot contours on 19,000+ US lakes and 9,400+ lakes in Canada.



ACTIVETARGET 2 LIVE SONAR

Add ActiveTarget 2 to your Elite FS system and track fish and lure presentations with high-resolution views in front or below your boat – or use the Scout mode to see an ultra-wide, overhead view of structure and fish activity in front of your boat.

EAGLE®

BORN TO FISH



Available in
4", 5", 7" & 9" Sizes

EAGLE® was born to make fishing as simple and enjoyable as possible. Eagle features newly designed HD sonar with autotuning, game changing FishReveal™ technology and detailed C-MAP® charting with Genesis Live – all on an IPS screen.

Enhanced Sonar

The newly designed TripleShot™ HD and SplitShot™ HD offer improved clarity, depth, and sensitivity, leading to better performance under the surface. And FishReveal™ on Downscan and Chirp makes it easier than ever before to tell the fish from the weeds.

Designed to Fish

With a new, rugged and modern design built exclusively for anglers, by anglers, Eagle features a new IPS screen for improved resolution, clarity and visibility, even with polarized sunglasses in direct sunlight. A new range of color palettes* lets you adapt the display for changing conditions. (*excludes 4x model)

Connect & Cast

Simple autotuning sonar gives you the optimal settings from the start so you don't have to spend time trying to find them yourself. Plus, an improved twist-locking connector allows for easy and reliable installation and removal, making Eagle a great portable solution for any type of fishing.



Key Features

- Enhanced SplitShot™ HD and TripleShot™ HD Autotuning sonar
- Detailed C-MAP® charts feat. Genesis® Live
- IPS screen, viewable from all angles, even in polarized glasses
- New reliable twist-lock connector system for easy installation in any boat or kayak
- SD card slot (5", 7" and 9" models) for software updates, Genesis Live recording and charting add-ons.
- See fish hiding in cover with FishReveal™ mode
- Increase contrast and viewability with all-new Imaging color palettes
- 4x model features portrait orientation and true-scroll sonar



GENESIS LIVE - MAPPING IN REAL TIME

Update the mapping of your favorite fishing spot or map uncharted areas – in real time – on the screen of your fishfinder/chartplotter with C-MAP Genesis Live.

Genesis Live is available on HDS® LIVE, Elite FS® and on



WHICH EAGLE IS BEST FOR ME?

Model	EAGLE 4x Sonar Only	EAGLE 5 Combo	EAGLE 7 Combo	EAGLE 7 Combo	EAGLE 9 Combo
TRANSDUCER	BULLET	SPLITSHOT	SPLITSHOT	TRIPLESHOT	TRIPLESHOT
Single Frequency Sonar					
Chirp					
DownScan Imaging					
SideScan Imaging					
Charts		C-MAP	C-MAP	C-MAP	C-MAP
GPS Mapping					
SD Card Slot		micro	micro	micro	micro
FishReveal					

ICE FISHING



Lowrance® Explorer Series, All Season & Portable Packs are easy to transport, come with an adjustable display mount, a pair of tackle boxes, a power cable and a battery ensuring you have everything you need, whether you are fishing from a small boat, or a stationery location, like ice or a dock.

NEW Explorer Series

The Explorer Series bring together The Elite Fishing System (FS) which combines the power of Lowrance's proven fishfinding tools with Live Sonar technology; ActiveTarget, all in one convenient pack designed to make your ice fishing experience the best it can be.

Elite FS All Season Pack

The Elite FS All-Season Pack comes with an Elite FS 7 fishfinder/chartplotter, power cable, ice transducer and HDI™ Skimmer® transducer, allowing anglers to use the display on both the ice and their boat.

HOOK 4x All Season Packs

HOOK 4x All-Season Packs, featuring high-resolution 4-inch display, Lowrance Broadband sonar and exclusive Autotuning sonar. All-Season Packs are available as sonar only and GPS Plotter models.

HOOK Reveal All Season Packs

The Hook Reveal 7 and Hook Reveal 5 Splitshot All-Season Packs offer Lowrance High CHIRP sonar, DownScan Imaging™ and FishReveal™, plus an easy to use interface and Autotuning sonar.

KAYAK FISHING

Kayak fishing has never been more popular and for good reason. Kayaks are more affordable than boats, provide access to areas boats can't reach and are easier to transport and store.

Rig your kayak with one of our Lowrance fishfinding displays and you can bring the same fishfinding sonar boaters have relied on for decades to your kayak.

Kayak Kit

The Portable Kayak Kit secures the battery, transducer and display to a single box, making it easy to mount and remove Lowrance products from the kayak, and features built-in transducer cable management that keeps excess transducer cable away from the anglers fishing from a kayak.

Key Features

- CellBlok™ supports 6AH 12V battery
- CellBlok is compatible with any unit that uses the Lowrance Quick Release Bracket
- Built-in transducer cable management keeps excess transducer cable out of the way
- RAM® Mount swing arm allows quick and easy mounting of all Lowrance Skimmer® transducers.

Kayak Scupper Mount

The Kayak Scupper Mount is the most convenient way to mount Lowrance transducers on sit-on-top kayaks without the hassle of drilling holes or using messy adhesives. The Scupper Mount ensures the transducer is totally submerged in the water while fishing, which provides maximum sonar sensitivity and the clearest views of structure and fish. Fits Lowrance Skimmer® transducers, including HDI™ with DownScan Imaging™.



GHOST[®]

TROLLING MOTOR

*Quiet by Name.
Powerful by Design*



Available as 47-, 52- AND 60-inch Shaft

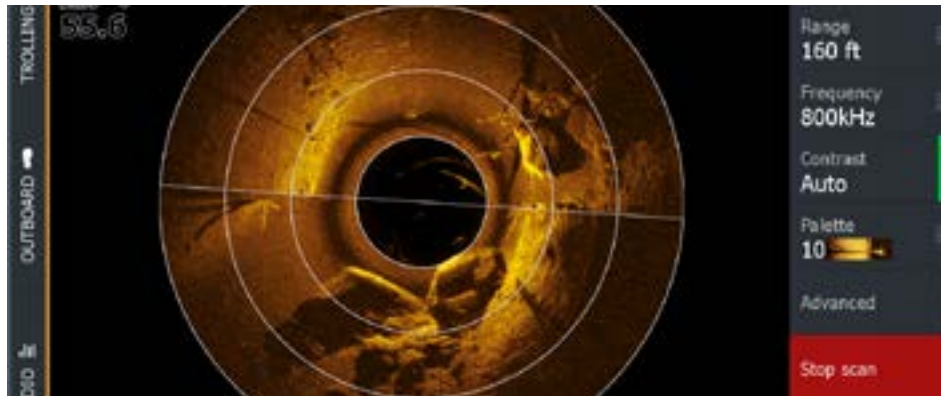
Fish longer, run faster and move in closer to the fish with rugged, reliable and ultra-quiet Ghost[®] Trolling Motors. Ghost has a quiet and powerful brushless motor with the most thrust and the longest run time of any trolling motor on the market.

Never spook another fish with the Ghost brushless motor, which delivers 25-percent more power and 60-percent greater efficiency, allowing you to silently cover more water, easily anchor when and where you want – even in strong winds – and stay on the water longer without draining your battery.



Key Features

- Reliable, Powerful & Efficient
- Silent Operation
- Fastest Top-End Speed
- Total Integration with HDS® PRO, HDS® LIVE and Elite FS®
- ActiveTarget® 2 Live Sonar Compatible
- Fly-By-Wire Steering
- HDI™ Nosecone, plus optional Active Imaging™ 3-in-1 Nosecone with 360-degree views
- Configurable Foot-pedal
- Interference Free
- 360° Breakaway Mount
- Easy to Stow and Go



Ghost® 360

High-resolution Ghost 360* provides a complete 360-degree view of the bottom, making it easier for anglers to pinpoint structure, cover and fish targets. The high-resolution, 360-degree scans of structure and cover – with up to a 300-foot max radius – are generated by the automatic rotation of the Ghost Trolling Motor with an Active Imaging™ HD 3-in-1 nosecone installed. *Requires Active Imaging HD 3-in-1 nosecone.

INCREDIBLE PERFORMANCE

Zoom from spot to spot or zip across the cove with up to 25-percent more thrust than competing models. Ghost's brushless motor also delivers 60-percent better run-time efficiency.

FLY-BY-WIRE STEERING

Instant and smooth fly-by-wire steering control gives Ghost the feel of a traditional cable-steer motor, but without the physical cables that wear out over time.



CONFIGURABLE FOOT-PEDAL

Configurable Ghost foot pedal has via programmable shortcut buttons and a Flipswitch™ that allows the trolling motor to be driven from either side of the pedal. The foot pedal features a battery-level indicator, plus Anchor and Heading mode quick access keys. Program the shortcut buttons to quickly drop a waypoint or raise/lower a Power-Pole®.

SILENT OPERATION

So silent you'll wonder if it's running, Ghost allows you to move in closer than ever before with its ultra-quiet brushless motor. Fish will never hear you coming.

TOTAL INTEGRATION

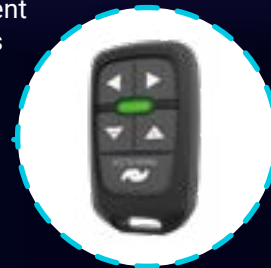
Steer your boat, adjust your speed, set up route navigation or anchor at your current location with full touchscreen control from HDS PRO, HDS LIVE, HDS Carbon and Elite FS displays.

AVAILABLE WITH 47-, 52- AND 60-INCH SHAFTS!

The longer trolling motor shafts are perfect for walleye and bass boats with higher bows.

OWN YOUR SPOT

Ghost's powerful and precise anchoring lets you anchor your boat on a waypoint, at your current location or anywhere on the map – regardless of wind conditions.



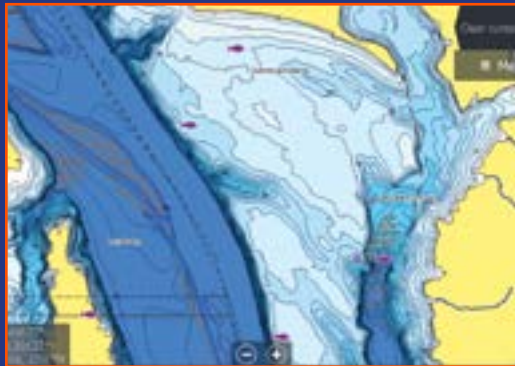
TMR-1 REMOTE

Control the Ghost trolling motor from anywhere on your boat with the optional TMR-1 Remote. (Included with Ghost 60)

MAPPING UPGRADES



Lowrance® fishfinder/chartplotters are compatible with a wide range of chart options, allowing you to handpick a map that best suits your mapping preferences from C-MAP®, Navionics®, CMOR, Florida Marine Tracks and more.

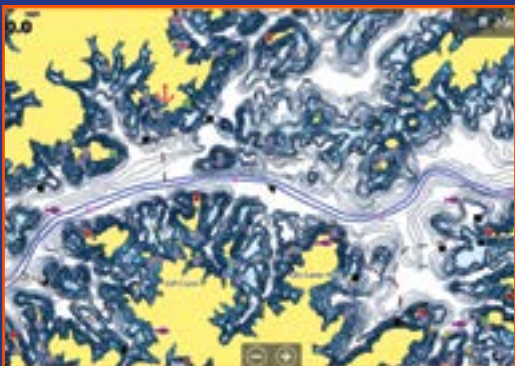


C-MAP DISCOVER® • *ULTRA-WIDE COVERAGE WITH ALL THE FEATURES*

C-MAP DISCOVER includes all of the great features of Discover Onboard, with an additional 12 months of Online Updates.

KEY FEATURES:

- Full-Featured Ultra-Wide Coverage
- High-Resolution Bathymetry
- Custom Depth Shading
- Easy Routing
- Detailed Marina Port Plans
- Online Updates (12 months free)
- Full Featured Vector Charts
- Tides & Currents
- Harbor & Approach Details

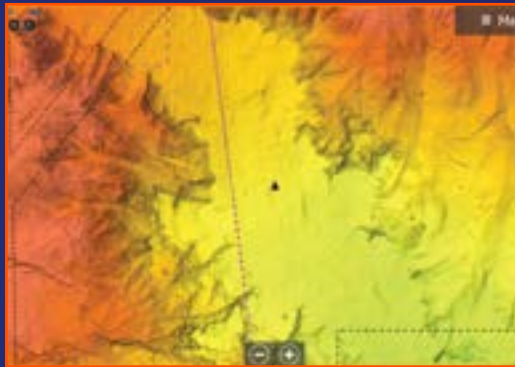


C-MAP Reveal™ Lakes • *THE BEST INLAND MAPPING ON A REGIONAL CARD*

Brings together all the best data C-MAP has to offer, from Precision Contour professional lake surveys, C-MAP Genesis® Social Maps and traditional lake maps.

KEY FEATURES:

- High-Resolution Bathymetry
- Shaded Relief
- Satellite Overlay
- Custom Depth Shading
- Easy Routing
- Detailed Marina Port Plans
- Online Updates (12 months free)
- Aerial Photography
- Full Featured Vector Charts
- Harbor & Approach Details



C-MAP REVEAL™ Coastal • THE BEST COASTAL MAPPING ON A SINGLE CARD

Whether cruising, fishing or sailing, C-MAP REVEAL Coastal charts offer the very best of C-MAP including the core features in DISCOVER charts, plus Shaded Relief, Reveal Seafloor coverage and more.

KEY FEATURES:

- C-MAP Reveal seafloor coverage
- High-Resolution Bathymetry
- Shaded Relief
- Aerial Photography
- Satellite Overlay
- Dynamic Raster Charts
- Full Featured Vector Charts
- Custom Depth Shading
- Easy Routing
- Tides & Currents
- Detailed Marina Port Plans
- Harbor & Approach Details
- Online Updates (12 months free)



C-MAP Genesis®

C-MAP Genesis allows you to create your own high definition fishing maps with one-foot contours. You can upload your maps to the community and explore and download other maps created by other users.

KEY FEATURES:

- Survey quality Contour Data
- Custom depth shading
- Points of Interest
- High resolution satellite imagery
- Preset Depth Shading Palettes, including Safety Shading
- Includes fishing regulations, records and ID photos

NAVIGATION



Navigating with Lowrance® has never been safer or easier – from revolutionary HALO® Radar, Link™-6S and Link-9 VHF Radios to the Precision™-9 compass and SmartSteer™ control of the Lowrance Outboard Pilot – you will have more control and greater situational awareness than ever.



HALO Radar

Available with industry-leading 60 RPM operation* at close range, HALO Radar delivers the ultimate in collision avoidance. Identify hazards in an instant with VelocityTrack™ Doppler technology and enjoy simultaneous short- and long-range coverage. HALO24, HALO20+ and HALO20 Radars are compatible with HDS PRO, HDS LIVE and Elite FS™ displays.

*HALO24/HALO20+ only

Link-9™

The Link-9 features an integrated GPS receiver, a removable fist mic, NMEA 2000® connectivity, a built-in dual - channel AIS receiver with AIS plot functionality, dual watch, tri-watch, all-scan, more intuitive user interface, a larger LCD and a new industrial design.



LINK-6S™

Communicate clearly with this dependable Class D DSC approved marine VHF radio featuring a four-button fist microphone, intuitive rotary and keypad controls and a new front-mountable mechanical design for easy installation.



Precision-9™

The Precision-9 Compass measures motion on nine separate axes to supply the most accurate heading and rate-of-turn information possible for Lowrance autopilot, radar and navigation systems.

Lowrance Autopilots

Lowrance autopilot packs for HDS displays provide automatic steering for cable-steer or hydraulic steer outboard motors on or low or high-current hydraulic steering pumps, mechanical drive units, or solenoid valves for inboard motors with our NAC-2 and NAC-3 pilots via NMEA 2000® networking and NMEA 0183® input with HDS®LIVE. Steer to a heading, waypoint or along a route with integrated SmartSteer™ control.



Point-1 GPS

Integrated electronic compass provides 10Hz GPS position updates plus compass heading for chart stabilization and radar overlay, plus accurate vessel heading, even at low speeds.

NETWORKING

With Lowrance® networking solutions, you can download C-MAP® Genesis® maps, map purchases and software updates directly to HDS® PRO, HDS LIVE and Elite FS® displays. View/control your HDS or Elite FS display on a smartphone/tablet, stream music, monitor the weather and more.

S3100 SONAR MODULE

The S3100 provides full support for high-definition Active Imaging™ HD sonar to HDS LIVE, HDS Carbon and Elite FS displays and Fish Reveal™ SideScan for HDS PRO. Active Imaging™ HD delivers the clearest images of fish and structure with Lowrance CHIRP sonar and high-frequency (up to 1.2 MHz)

SideScan and DownScan Imaging – plus FishReveal DownScan and NEW SideScan views, making fish identification easier below and to the sides of the boat.



NMEA 2000®

Lowrance NMEA 2000 network devices will share and/or display user-selectable data with displays and instruments installed on a NMEA 2000 network.



WM-4 SiriusXM® Marine Audio & Weather

The new, compact WM-4 SiriusXM Marine Audio and Weather module brings the power of an entire weather bureau to your Lowrance HDS display with weather radar, forecasts, weather warnings, roadside fuel prices and new Fish Mapping, plus up to 220 expanded audio channels.



Power-Pole® Connectivity

Enjoy independent or simultaneous control of multiple Power-Pole Shallow Water Anchors and make manual or automatic adjustments directly from your touchscreen of HDS PRO, HDS LIVE and Elite FS displays.





LOWRANCE®



facebook.com/lowrance



youtube.com/user/lowrance



twitter.com/lowrancefishing



instagram.com/lowrancefishing

Telephone: 1.800.628.4487 • www.lowrance.com

Products, features and specifications subject to change without notice.

LOW-018-CAT-0223-ENG-AMER

©2024 Navico®

©Reg. U.S. Pat. & Tm. Off. and ™ common law marks. Visit www.navico.com/intellectual-property to review the global trademark rights and accreditations for Navico Holding AS and other entities.